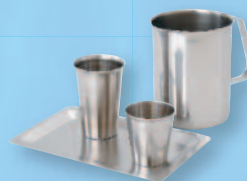
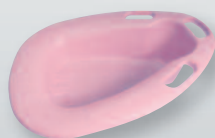


Bedside **ESSENTIALS**



Today, more than ever, medical professionals can't afford to settle for just average performance in their health care products. It's critical for you to know you can count on every product performing as expected. That's why Medegen Medical Products pays meticulous attention to every detail of its full line of patient bedside essentials. Working under the most stringent quality controls ensures that every product from Medegen Medical Products is crafted to the same exacting standards of excellence, from design and manufacture to packaging and delivery. Superior performance begins with uncompromising quality. Let Medegen help you provide. . .

Better Healthcare Through Better Products.



Table of Contents

Pitchers, Carafes and Accessories 2

Bedside Pitchers and Carafes	2
Pitchers with Cup Cover	3
Carafes with Cup Covers	3
Insulated Mugs	4
Pitchers - Liners	4
Pitchers - Liners and Sets, Jacket Sets	5
Tumblers	5
Service Trays - Rectangular	6
Bedside Water Service	7
Patient Bedside Utensils - Stainless Steel*	7

Emesis Products 8

Emesis Bag and Dispenser	8
Emesis Basins	8-9

Wash Basins, Bowls and Accessories 9

Wash Basins - Round	9
Wash Basins/Sponge - Round	10
O.R. Basins	10
Guide Wire Bowls	10
Placenta Basins	10
Wash Basins - Stainless Steel*	11
Wash Basins Solution/Sponge	11
Iodine Cups/Bowls/Basins - Stainless Steel*	11
Wash Basins - Rectangular	12
Wash Basins - Foot Tub	12
Soap Dishes	13

Bedpans 14

Bedpans - Fracture	14-15
Bedpans - Commode, Stackable	15
Bedpans - Stackable	15
Bedpans - Pontoon	16
Bedpans - Conventional	16-17
Bedpans - Bariatric	17
Bedpans and Urinals - Stainless Steel*	17

**All products are are Latex Free (LF),
DEHP and BPA free.**

*Sterilizable products can withstand temperature
up to 275° F(135°C), steam sterilization.

Urinals 18

Male	18
Female	19
Male Urinals Sterilizable	19
Uri-Clip™	19

Stedi Tred® Fall Prevention Slippers 20

Cleansing/Irrigation 21

Sitz Baths	21
Cleansing Enema Set	21
Vaginal Irrigation Set	22
Perineal Bottle	22
Shave Prep Razors	22
Ear/Ulcer Syringe - Bulb	23
Piston Syringe	23
Bulb Syringe	23
Irrigation Tray	23

Denture Cups 24

Procedure Trays 24

O.R. Trays 24

Medicine Cups 25

Collectors 26

Specimen Collectors	26
Triangular Graduates	26

Stainless Steel Essentials 27

Graduated Measures*	27
Beaker/Griffins/Oil Cups*	27
Ointment Jars*	28
Applicatory Jars*	28
Dressing Jars*	28
Forcep Jars*	28
Buckets and Pails*	29
Storage Containers and Covers*	29
Instrument Trays*	30-31

Product Number Index 32-33

Pitchers and Carafes



H222

H222 Series Lid

- “Straw Port” on top of lid
- Secure leak resistant lid and spout can rotate into alternate positions to facilitate “left handed or right handed” pouring
- Flat top design allows stacking of assembled units
- “E-Z tabs” on outer rim of lid assists in removing lid from base to facilitate easier re-filling of water and ice

Bedside Pitchers and Carafes

- These durable pitchers all feature an easy to grip handle for single-handed use
- Liners and jackets are also available as sets or individually
- H222 Series[†]
 - Handle design allows easier one handed pouring
 - Base rim and inner lid lip design offer a more secure and leak resistant seal
 - Structural reinforcement and design of handle reduces flexing when pitcher is full of water/ice
 - Texture on handle and outer rim of base offers easy grip surfaces
 - Frosted “Patient Info” window on outside wall of pitcher base

Code#	Color	Capacity	Qty/cs	Packaging
Pitcher w/Straw Port[‡], Translucent Lid.				
H222-05	Gold	28 oz/830mL	100	Bulk w/Liner, Lids Bagged
H222-07	Turquoise	28 oz/830mL	100	Bulk w/Liner, Lids Bagged
H222-10	Dusty Rose	28 oz/830mL	100	Bulk w/Liner, Lids Bagged
H222-11	Gray	28 oz/830mL	100	Bulk w/Liner, Lids Bagged
Replacement Lid For H222 Series.				
O1195	Translucent	–	500	Bulk



H224-10

- H224 features both a front hinged translucent lid and ice guard. A snap-on jacket is also available in dusty rose

Code#	Color	Capacity	Qty/cs	Packaging
Pitcher w/Front Hinged Lid.				
H224-10	Dusty Rose	28 oz/830mL	100	Bulk

The material used for all the above plastic products is polypropylene unless otherwise indicated. Items are Latex Free (LF), DEHP and BPA free.

[†]Patent US D683175

Pitchers and Carafes

Pitchers with 9 oz Cup Covers (Sterilizable*)

- These 32 ounce (one quart) sterilizable pitchers and carafes have a cover that serves as a serving cup
- The pitcher has a wide, no tip base, smooth pour spout and an easy-grip handle
- The carafe has a contoured base making it easy to handle
- Cup covers are available separately

Code#	Color	Capacity	Qty/cs	Packaging
Pitcher.				
00110	Blue	1 qt./950mL	12	Individually Bagged
16110	Dusty Rose	1 qt./950mL	12	Individually Bagged
Cup/Cover For 00110.				
00111	Blue	9 oz./270mL	12	Bulk
Cup/Cover For 16110.				
16111	Dusty Rose	9 oz./270mL	12	Bulk



Carafes with 5 oz Cup Covers (Sterilizable*)

Code#	Color	Capacity	Qty/cs	Packaging
Carafe w/Cup Cover.				
00112	Blue	1 qt./950mL	12	Individually Bagged
16112	Dusty Rose	1 qt./950mL	12	Individually Bagged
Cup/Cover For 00112.				
00113	Blue	5 oz./150mL	12	12 Per Bag
Cup/Cover For 16112.				
16113	Dusty Rose	5 oz./150mL	12	12 Per Bag



The material used for all the above plastic products is polypropylene unless otherwise indicated.

*Sterilizable products can withstand temperature up to 275° F (135° C), steam sterilization.

Items are Latex Free (LF), DEHP and BPA free.

Insulated Mugs



H205-01

H204-08, H204-10,
H204-11

- Insulated mugs are ideal for patient bedside, extended care, and home health use
- Double wall thermo design keeps drinks cold and minimizes the need to continually add ice
- All insulated mug lids have recloseable dual straw ports to prevent contamination
- Straws come with removable cover/cap for easy patient use and to prevent contamination
- Replacement covers are available separately below
- Diameter of opening for straw is 3/8"

Code#	Color	Capacity	Qty/cs	Packaging
Mugs w/Graduates, Translucent Base, Straw.				
H204-01	Translucent Base/Blue Lid	22 oz/650mL	60	Bulk
H205-01	Translucent Base/Blue Lid	32 oz/950mL	40	Bulk
Insulated Mug w/Straw.				
H204-08	Ivory	22 oz/650mL	60	Bulk
H204-10	Dusty Rose	22 oz/650mL	60	Bulk
H204-11	Gray	22 oz/650mL	60	Bulk
H205-08	Ivory	32 oz/950mL	40	Bulk
H205-10	Dusty Rose	32 oz/950mL	40	Bulk
H205-11	Gray	32 oz/950mL	40	Bulk
Replacement Lids for H204 and H205 series				
HLID-01	Blue		40	Bulk
HLID-08	Ivory		40	Bulk
HLID-10	Dusty Rose		40	Bulk
HLID-11	Gray		40	Bulk



HLID

The material used for all the above plastic products is polypropylene unless otherwise indicated.
Items are Latex Free (LF), DEHP and BPA free.

Pitchers and Accessories

Pitcher Liner Sets

Code#	Color	Capacity	Qty/cs	Packaging
Pitcher (H222) and Liner (H223-01) Set, (Material: Polypropylene/Polystyrene).				
H220-05	Gold	28 oz/830mL	27	Bulk In Poly Bag
H220-10	Dusty Rose	28 oz/830mL	27	Bulk In Poly Bag
Pitcher (H222) and Liner (H227-02) Set, (Material: Polypropylene/Polystyrene Foam).				
H238-10	Dusty Rose	28 oz/830mL	27	Bulk In Poly Bag



H238-10

Pitcher Jacket and Sets

- To better insulate pitchers and carafes, foam jackets assist in maintaining liquids at the desired temperature
- These close fitting jackets are great for reducing condensation and pooling of liquids
- Jackets are available separately and in sets

Code#	Color	Capacity	Qty/cs	Packaging
Jacket For H222 Pitcher, (Material: Polystyrene Foam).				
H219-02	White	–	200	20 Sleeves of 10 Each
Jacket For H224 Pitcher.				
H225-10	Dusty Rose	–	200	Bulk In Poly Bag
Pitcher (H222) and Foam Jacket (H219-02) Set, (Material: Polypropylene/Polystyrene).				
H228-10	Dusty Rose	28 oz/830mL	27	Bulk In Poly Bag



H219-02



H225-10



H228

Tumblers

- Complementing the pitcher and carafe line, shatter proof easy grasping tumblers make perfect drinking cups
- Graduated 10cc to 230cc and ½ oz. increments ½ oz. to 8oz.
- Rounded edges allow for drinking comfort and stacking ease. Select either disposable or sterilizable tumblers

Code#	Color	Capacity	Qty/cs	Packaging
H250-05	Gold	8 oz/230 cc	500	25 Sleeves of 20 Each
H250-07	Turquoise	8 oz/230 cc	500	25 Sleeves of 20 Each
H250-10	Dusty Rose	8 oz/230 cc	500	25 Sleeves of 20 Each
H250-11	Gray	8 oz/230 cc	500	25 Sleeves of 20 Each
O2067	Translucent	8 oz/230 cc	500	25 Sleeves of 20 Each
O2069	Clear Base/(PS)	8 oz/230 cc	500	25 Sleeves of 20 Each

Graduations Printed Red: 10 cc increments from 30 cc to 270 cc and in ½ oz increments from 1 oz to 9 oz.

O2068A	Translucent	9 oz/255 cc	500	20 Sleeves of 25 Each
--------	-------------	-------------	-----	-----------------------



O2068A

Tumblers (Sterilizable*)

Code#	Color	Capacity	Qty/cs	Packaging
00120	Blue	8 oz/237 cc	24	Bulk
16120	Dusty Rose	8 oz/237 cc	24	Bulk



H250-10



H250-11



H250-05

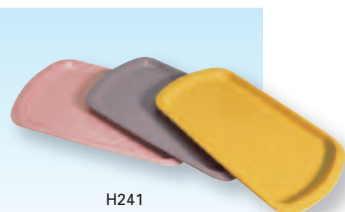
The material used for all the above plastic products is polypropylene unless otherwise indicated. Items are Latex Free (LF), DEHP and BPA free.

To Order: 800.511.6298 • www.medegenmed.com

Pitchers and Accessories

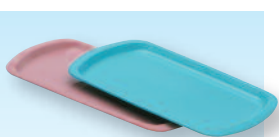
Service Trays — Rectangular

- Add the finishing touch to pitchers/carafes and tumblers with rectangular service trays
- These trays provide the ideal surface for accommodating carafes or tumblers and capturing condensation



H241

Code#	Color	Size (inches)	Qty/cs	Packaging
H241-05	Gold	9 x 6	200	Bulk
H241-07	Turquoise	9 x 6	200	Bulk
H241-10	Dusty Rose	9 x 6	200	Bulk
H241-11	Gray	9 x 6	200	Bulk



16130, 00130

Service Trays — Rectangular (Sterilizable*)

Code#	Color	Size (inches)	Qty/cs	Packaging
00130	Blue	9 x 6	12	Bulk w/Liner
16130	Dusty Rose	9 x 6	12	Bulk w/Liner

Pitcher Liners

Code#	Color	Capacity	Qty/cs	Packaging
Use w/H222 Pitcher, Graduated: 50 mL to 750 mL and 1 oz increments from 1oz to 26 oz, (Material: Polystyrene Foam).				
H227-02	White	26 oz/750mL	500	25 Bags of 20 Each
Use w/H222 and H224 Pitchers, Lightweight, Plastic, Graduated: 50 mL to 800 mL and 1 oz increments from 1oz to 28 oz, (Material: Polystyrene).				
H223-01	Translucent	28 oz/800mL	500	20 Bags of 25 Each



H223-01

H227-02

Liners

- Ideal for replenishing, insulating fluids and reducing condensation, liners are perfect companions for disposable pitchers.
- Liners are available separately and in sets.

The material used for all the above plastic products is polypropylene unless otherwise indicated.

**Sterilizable products can withstand temperature up to 275° F (135° C), steam sterilization.*

Items are Latex Free (LF), DEHP and BPA free.

Pitchers and Accessories

Bedside Water Service — 4 Piece Sets

- This four piece prepackaged bedside set is polybagged to ensure cleanliness which can also be used as a carry home bag
- Prepackaged kits save time since there is no assembly required
- Includes a pitcher (H222), liner (H223-01), tumbler (H250) and a rectangular tray (H241)



H236-10

Code#	Color	Qty/cs	Packaging
(Material: Polypropylene/Polyethylene).			
H236-05	Gold	20	Individually Bagged
H236-10	Dusty Rose	20	Individually Bagged

Bedside Water Service — 3 Piece Set - Pitcher, Liner And Tumbler

Code#	Color	Qty/cs	Packaging
(Material: Polypropylene/Polyethylene).			
H237-10	Dusty Rose	27	Bulk

Patient Bedside Utensils — Stainless Steel *

- The 81020 straight-sided stainless steel pitcher is designed with a closed handle for strength and convenience in carrying
- Our stainless steel tumblers have rounded edges for patient safety and comfort while drinking
- Sold individually

Code#	Capacity	Top Dia x Btm Dia x H (inches)
Tumbler		
68470 [†]	7 oz./207mL	2 ³ / ₄ x 1 ⁷ / ₈ x 3 ¹ / ₈
Pitcher, Straight-Sided		
81020 [†]	64 oz./1900mL	5 ¹ / ₈ x 4 ³ / ₄ x 6 ³ / ₈
Tray.		
81100		10 ¹ / ₄ x 6 ³ / ₄ x 3 ³ / ₈



[†]NSA Approved (National Sanitation Foundation).

*Sterilizable products can withstand temperature up to 275° F (135° C), steam sterilization.
Items are Latex Free (LF), DEHP and BPA free.

Emesis Products



3933D

3933

Emesis Bag and Dispenser

- **Convenience:** Wide opening is fully supported by a rigid plastic ring to help ensure unobstructed access to the containment bag while providing a round grasping surface for secure grip and proper positioning around the mouth
- **Capacity:** Deep cylindrical shape holds in excess of 1000 cc/mL (40fl.oz) for managing vomit, preventing spills, contamination, and costly clean ups. Durable polyethylene construction is lightweight and tear resistant
- **Minimize Exposure:** Rigid ring channels fluid into the emesis bag to help reduce spillage and manage exposure
- **Secure Disposal:** Twist, close, and hook bag into plastic ring support notch for easy, one step disposal of contents and emesis bag. Odors are contained during transport

Code#	Color	Capacity	Qty/cs	Qty/pkg
Bag w/Ring, Graduated: 100 cc increments from 100 cc to 1000 cc and every 4 oz from 4 oz to 40 oz, (Material: Polyethylene).				
1933	White Ring/Transparent Green	1000 cc	100	4 sleeves of 25
2933	White Ring/Clear/ Natural	1000 cc	100	4 sleeves of 25
3933	White Ring/Transparent Blue	1000 cc	100	4 sleeves of 25

- **Easy Dispensing:** Wall hanging dispenser (3933D) holds folded containment bags securely and facilitates individual dispensing when needed

Dispenser for 3933 Emesis Bag, (Material: Polyethylene/Rubber).

3933D	Blue Top/Bottom, Clear Base	25 emesis bags	1	Bulk
-------	-----------------------------	----------------	---	------

Emesis Basins

- Rounded edges and flexible design facilitate handling and use. Ideal for containing fluids, measuring output, routine oral care or even a personal effects tray

Code#	Color	L x H x W (inches)	Capacity	Qty/cs	Packaging
Graduated: 100 cc increments from 100 cc to 500 cc and every 4 oz from 4 oz to 16 oz.					
H300-05	Gold	8.4 x 3.8 x 2	16 oz/500mL	250	Bulk
H300-07	Turquoise	8.4 x 3.8 x 2	16 oz/500mL	250	Bulk
H300-10	Dusty Rose	8.4 x 3.8 x 2	16 oz/500mL	250	Bulk
H300-11	Gray	8.4 x 3.8 x 2	16 oz/500mL	250	Bulk

Graduated: 100 cc increments from 100 cc to 700 cc and every 4 oz from 4 oz to 20 oz.

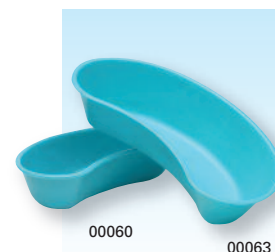
H310-05	Gold	9.7 x 4.7 x 2	20 oz/700mL	250	Bulk
H310-07	Turquoise	9.7 x 4.7 x 2	20 oz/700mL	250	Bulk
H310-10	Dusty Rose	9.7 x 4.7 x 2	20 oz/700mL	250	Bulk
H310-11	Gray	9.7 x 4.7 x 2	20 oz/700mL	250	Bulk

The material used for all the above plastic products is polypropylene unless otherwise indicated. Items are Latex Free (LF), DEHP and BPA free.

Emesis Products

Emesis Basin (Sterilizable*)

Code#	Color	Capacity	L x W x H (inches)	Qty/cs	Packaging
Graduated: 100 cc increments from 100 cc to 500 cc and every 4 oz from 4 oz to 16 oz.					
00060	Blue	16 oz/500mL	8.4 x 3.8 x 2	12	Bulk
Graduated: 100 cc increments from 100 cc to 840 cc and every 4 oz from 4 oz to 24 oz.					
00063	Blue	24 oz/840mL	9.8 x 5.4 x 2.1	24	Bulk



Emesis Basin — Stainless Steel*

- Heavy gauge and easy to handle emesis basins offer a smooth design for easy handling
- Sold individually

Code#	Capacity	L x W x H (inches)
88560	12 oz/400mL	6 ⁷ / ₈ x 4 ¹ / ₈ x 1 ¹ / ₂
88580	16 oz/500mL	8 ¹ / ₄ x 4 ³ / ₈ x 1 ³ / ₄
88600	28 oz/800mL	10 x 5 ³ / ₈ x 2
88620	56 oz/1700mL	12 ¹ / ₈ x 6 ¹ / ₂ x 2 ¹ / ₂



Wash Basins

Wash Basins — Round

- Smooth edges serve as built in handles, making them easy to handle transporting to and from the bedside
- The H350 wash basin can also accommodate the H371 soap dish

Code#	Color	Dia x H (inches)	Capacity	Qty/cs	Packaging
H350-05	Gold	12 x 3.9	5 qt./4.7 L	50	Bulk
H350-07	Turquoise	12 x 3.9	5 qt./4.7 L	50	Bulk
H350-10	Dusty Rose	12 x 3.9	5 qt./4.7 L	50	Bulk
H350-11	Gray	12 x 3.9	5 qt./4.7 L	50	Bulk
H354-05	Gold	13 x 3.9	6 qt./5.7 L	50	Bulk
H354-07	Turquoise	13 x 3.9	6 qt./5.7 L	50	Bulk
H354-10	Dusty Rose	13 x 3.9	6 qt./5.7 L	50	Bulk



The material used for all the above plastic products is polypropylene unless otherwise indicated.

*Sterilizable products can withstand temperature up to 275° F (135° C), steam sterilization.

Items are Latex Free (LF), DEHP and BPA free.

To Order: 800.511.6298 • www.medegenmed.com

Wash Basins

Wash Basins — Round (Sterilizable*)

Code#	Color	Capacity	Dia x H (inches)	Qty/cs	Packaging
00040	Blue	3.8 qt./3.6 L	12 x 3.5	12	Bulk
00041	Blue	5 qt./4.7 L	13 x 3.8	12	Bulk
00046	Blue	6 qt./5.7 L	13 x 4	12	Bulk

Wash Basins/Sponge — Round (Sterilizable*)

Code#	Color	Capacity	Dia x H (inches)	Qty/cs	Packaging
00050	Blue	1 ³ / ₈ qt./1.3 L	6.5 x 3.1	12	Bulk
00100	Blue	7 qt./6.6 L	14 x 4.6	12	Bulk

O.R. Basins

Code #	Color	Capacity	Sterile	Qty/cs	Packaging	Cover
01216	Blue	16 oz./500mL	Yes	75	Peel Pouch	
04216	Turquoise	16 oz./500mL	ETO Sterilizable	100	Bulk	
CPB-16	Blue	16 oz./500mL	ETO Sterilizable	600	Bulk	
P01629-500	Blue	16 oz./500mL	ETO & Radiation Sterilizable	500	Bulk	
01232	Blue	32 oz./1000mL	Yes	50	Peel Pouch	
07332	Turquoise	32 oz./1000mL	ETO Sterilizable	100	Bulk	
CPB-32	Blue	32 oz./1000mL	ETO Sterilizable	320	Bulk	white
P01630-250	Blue	32 oz./1000mL	ETO & Radiation Sterilizable	250	Bulk	
02433	White	32 oz./1000mL	ETO Sterilizable	250	Bulk	
H800-07	Turquoise	6 L/6000mL	ETO Sterilizable	50	Bulk	

Guide Wire Bowls

Part #	Color	Capacity	Sterile	Qty/cs	Packaging
07105	Turquoise	74 oz./2200mL	ETO Sterilizable	380	Bulk
07107	Turquoise	74 oz./2200mL	ETO Sterilizable	60	Bulk
07110	Blue	152 oz./4500mL	ETO Sterilizable	20	Bulk
27207	Turquoise	74 oz./2200mL	Gamma Stable	60	Bulk
4870-02	Turquoise	180 oz./5500mL	ETO Sterilizable	50	Bulk
P01633-050	Lt. Blue	180 oz./5500mL	ETO Sterilizable	50	Bulk
02117	Lid for 07105, 07107, 27207 Guide Wire Bowls			-120	Bulk

Placenta Basins

Code#	Color	Capacity	L x W x H (inches)	Qty/cs	Packaging
02010	White	120 oz./4000cc	13 x 8.5 x 3	50	Bulk
02011	White	Lid for 02010	-	100	Bulk

The material used for all the above plastic products is polypropylene unless otherwise indicated.
 *Sterilizable products can withstand temperature up to 275° F (135° C), steam sterilization.
 Items are Latex Free (LF), DEHP and BPA free.

Wash Basins

Wash Basins — Stainless Steel *

- Heavy gauge stainless steel wash basins have wide flanges for convenient carrying. The full sized foot basin can accommodate two large feet or forearms at one time and features strap handles for easy carrying
- Sold individually



Code#	Capacity	L x W x H (inches)	Dia x H (inches)
Foot Basin, Oval, w/Handles.			
86300	10 qt./9.5 L	19 x 12 ⁷ / ₈ x 4 ⁷ / ₈	
Wash Basin, Round.			
87120	3 ⁷ / ₈ qt./3.7 L		12 ³ / ₈ x 3 ¹ / ₄
87130	5 qt./4.7 L		13 ¹ / ₄ x 3 ⁵ / ₈

Wash Basins Solution/Sponge — Stainless Steel *

- Stainless steel solution basins provide rounded radius corners for easy cleaning and a flo-spin recessed bottom. The wide flange fits all size ring stand
- Sold individually



Code#	Capacity	Dia x H (inches)
87300	5 qt./4.7 L	12 x 4 ¹ / ₄
87320	5 ⁵ / ₈ Qt	12 x 4 ¹ / ₂
87340	7 qt./6.6 L	13 ⁵ / ₈ x 4 ⁵ / ₈
87360	8 ¹ / ₂ qt./8 L	14 ¹ / ₂ x 4 ³ / ₄
87404	3 ³ / ₈ qt./4 L	4 ¹ / ₄ x 2
87406	5 ⁵ / ₈ qt./6 L	5 ¹ / ₄ x 2 ¹ / ₄
87410	1 qt./9 L	6 ¹ / ₈ x 2 ¹ / ₂
87414	1 ¹ / ₂ qt./1.4 L	6 ⁷ / ₈ x 3
87420	1 ⁷ / ₈ qt./1.8 L	7 ¹ / ₂ x 3
68750 [†]	7 ⁷ / ₈ qt./5 L	5 ¹ / ₂ x 2 ¹ / ₈
69006 [†]	3 ³ / ₄ qt./7 L	6 ¹ / ₄ x 2 ³ / ₈
M69014 [†]	1 ¹ / ₂ qt./1.4 L	7 ³ / ₄ OD x 3
69030 [†]	3 qt./2.8 L	9 ¹ / ₂ x 4
69040 [†]	4 qt./3.8 L	10 ³ / ₈ x 4 ³ / ₈

Iodine Cups/Bowls/Basins — Stainless Steel

- 6 and 14 oz. hand size cups are easily held during procedures and are also ideal for soaking sponges
- Sold individually



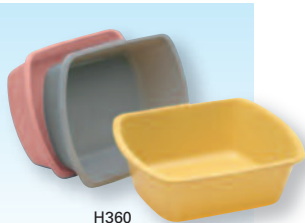
Code#	Capacity	Dia x H (inches)
M69260	6 oz./177 mL	3 ¹ / ₂ x 1 ³ / ₄
M69290	14 oz./414 mL	4 ⁵ / ₈ x 2 ³ / ₈

[†]NSA Approved (National Sanitation Foundation).

*Sterilizable products can withstand temperature up to 275° F (135° C), steam sterilization.
Items are Latex Free (LF), DEHP and BPA free.

To Order: 800.511.6298 • www.medegenmed.com

Wash Basins



H360



H361-10



00047

Wash Basins — Rectangular

- Additional soap dishes are found on page 13
- For convenience, graduations are located along both sides of the wash basin

Code#	Color	Capacity	L x W x H (inches)	Qty/cs	Packaging
Graduated: Both qt and L in 1 qt increments from 2 qt to 6 qt and 1 L increments from 2 L to 5 L.					
H360-05	Gold	6 qt/5.7 L	12.6 x 10 x 4.2	50	Bulk
H360-10	Dusty Rose	6 qt/5.7 L	12.6 x 10 x 4.2	50	Bulk
H360-11	Gray	6 qt/5.7 L	12.6 x 10 x 4.2	50	Bulk

Graduated: Both qt and L in fl qt increments from 1 qt to 3 qt and fl L increments from 1 L to 3 L.

H361-10	Dusty Rose	3.5 qt/3.3 L	10 x 7 x 4	100	Bulk
---------	------------	--------------	------------	-----	------

Wash Basins — Foot Tub, Rectangular (Sterilizable*)

Code#	Color	Capacity	L x W x H (inches)	Qty/cs	Packaging
00047	Blue	7.5 qt/7.1 L	12.6 x 10 x 5	12	Bulk

Wash Basins — Foot Tub, Rectangular

Code#	Color	Capacity	L x W x H (inches)	Qty/cs	Packaging
H362-05	Gold	7 qt/6.6 L	13 x 10 x 5	50	Bulk
H362-07	Turquoise	7 qt/6.6 L	13 x 10 x 5	50	Bulk
H362-10	Dusty Rose	7 qt/6.6 L	13 x 10 x 5	50	Bulk
H362-11	Gray	7 qt/6.6 L	13 x 10 x 5	50	Bulk

The material used for all the above plastic products is polypropylene unless otherwise indicated.

**Sterilizable products can withstand temperature up to 275° F (135° C), steam sterilization.*

Items are Latex Free (LF), DEHP and BPA free.

Wash Basins

Soap Dishes

- Specially designed to attach onto rectangular wash basins, the H371 soap dishes are perfect with both rectangular and round basin styles
- All soap dishes have ribbed surfaces

Code#	Color	L x W (inches)	Qty/cs	Packaging
H370-05	Gold	3.7 x 2.6	1000	Bulk
H370-10	Dusty Rose	3.7 x 2.6	1000	Bulk
H370-11	Gray	3.7 x 2.6	1000	Bulk



H370

Soap Dishes — Snap On

Code#	Color	L x W (inches)	Qty/cs	Packaging
H371-05	Gold	3.8 x 2.8	500	Bulk
H371-07	Turquoise	3.8 x 2.8	500	Bulk
H371-10	Dusty Rose	3.8 x 2.8	500	Bulk
H371-11	Gray	3.8 x 2.8	500	Bulk



H371

Soap Dish and Drain Tray (Sterilizable*)

Code#	Color	L x W x H (inches)	Qty/cs	Packaging
00020	Blue	5.4 x 4 x 1.4	24	Bulk



00020

The material used for all the above plastic products is polypropylene unless otherwise indicated.

*Sterilizable products can withstand temperature up to 275° F (135° C), steam sterilization.

Items are Latex Free (LF), DEHP and BPA free.

Bedpans



H100

Bedpans — Fracture

- Designed with immobile patients in mind, fracture bedpans have a tapered end for improved comfort and ease of placement
- Plastic guard prevents spills and built in handles simplify placement and removal
- Fracture bedpans are ideal substitutes for a female urinal

Code#	Color	Capacity	L x W x FH x BH (inches)	Qty/cs	Packaging
Weight Capacity[†]: 250 lbs.					
H100-05	Gold	34 oz.	13 x 8 x 3.4 x 1	50	Bulk
H100-07	Turquoise	34 oz.	13 x 8 x 3.4 x 1	50	Bulk
H100-10	Dusty Rose	34 oz.	13 x 8 x 3.4 x 1	50	Bulk
H100-11	Gray	34 oz.	13 x 8 x 3.4 x 1	50	Bulk
H100BG-05	Gold	34 oz.	13 x 8 x 3.4 x 1	50	Individually Bagged
H102-05	Gold	34 oz.	13 x 8 x 3.4 x 1	12	Bulk
H102-10	Dusty Rose	34 oz.	13 x 8 x 3.4 x 1	12	Bulk

Bedpans — Fracture (Sterilizable*)

Code#	Color	Capacity	L x W x FH x BH (inches)	Qty/cs	Packaging
Weight Capacity[†]: 250 lbs.					
00081	Blue	1 Qt.	13 x 8.7 x 3.3 x 0.9	6	Bulk

Bedpans — Fracture, Large

- The flat base of this 2500 cc large fracture bedpan creates stability for the larger patient
- The added capacity also reduces spillage and facilitates transport

Code#	Color	Capacity	L x W x FH x BH (inches)	Qty/cs	Packaging
Weight Capacity[†]: 350 lbs					
H101-05	Gold	2.5 L	17 x 10.6 x 4.1 x 0.9	12	Bulk
H101-10	Dusty Rose	2.5 L	17 x 10.6 x 4.1 x 0.9	12	Bulk

Bedpans — Fracture, Large (Sterilizable*)

Code#	Color	Capacity	L x W x FH x BH (inches)	Qty/cs	Packaging
Weight Capacity[†]: 350 lbs					
00083	Blue	2.5 L	17 x 10.6 x 4.1 x 0.9	6	Individually Bagged

[†]Weight that bedpans can hold as indicated is "deadweight" and not patient weight. Bedpans hold the weight of the patient's buttocks and mid-trunk of their body. The head, arms, legs and chest are supported by the bedding. The material used for all the above plastic products is polypropylene unless otherwise indicated.

*Sterilizable products can withstand temperature up to 275° F (135° C), steam sterilization. Items are Latex Free (LF), DEHP and BPA free.

Bedpans

Bedpans — Fracture, Deluxe

- The Deluxe or Pediatric Fracture Bedpan offers lower tapered sides for optimal comfort

Code#	Color	Capacity	L x W x FH x BH (inches)	Qty/cs	Packaging
Weight Capacity²: 350 lbs					
H103-10	Dusty Rose	2 qt./1.9 L	13 x 10.1 x 3.1 x 1.6	50	Bulk

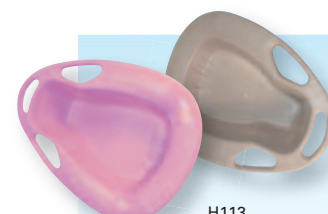


H103-10

Bedpans — Commode, Stackable with Handles

- The H113 and H112 designed to fit the commode/toilet for collection
- To maximize storage options, units nest nicely together
- Both provide comfort and convenience

Code#	Color	Capacity	L x W x FH x BH (inches)	Qty/cs	Packaging
Weight Capacity²: 250 lbs					
H113-05	Gold	2 qt./1.9 L	15 x 11.4 x 4.6 x 2.6	50	Bulk
H113-07	Turquoise	2 qt./1.9 L	15 x 11.4 x 4.6 x 2.6	50	Bulk
H113-10	Dusty Rose	2 qt./1.9 L	15 x 11.4 x 4.6 x 2.6	50	Bulk
H113-11	Gray	2 qt./1.9 L	15 x 11.4 x 4.6 x 2.6	50	Bulk



H113

Patent# US 670377

Bedpans — Stackable

- Stackable bedpans are great space savers. To maximize storage options, units nest nicely together
- Select from original or skirt styles. Both provide comfort and convenience

Code#	Color	Capacity	L x W x FH x BH (inches)	Qty/cs	Packaging
Weight Capacity²: 300 lbs					
H9113-05	Gold	2 qt./1.9 L	15 x 11.4 x 4.6 x 2.6	50	Bulk
H9113-10	Dusty Rose	2 qt./1.9 L	15 x 11.4 x 4.6 x 2.6	50	Bulk

Original Stackable, Weight Capacity²: 250 lbs

H112-05	Gold	2 qt./1.9 L	13 x 12 x 3.1 x 3.1	50	Bulk
H112-07	Turquoise	2 qt./1.9 L	13 x 12 x 3.1 x 3.1	50	Bulk
H112-11	Gray		13 x 12 x 3.1 x 3.1	50	Bulk

w/Skirt, Weight Capacity²: 250 lbs

H111-05	Gold	1.75 qt./1.66 L	15 x 11 x 4.4 x 2.5	50	Bulk
H111-10	Dusty Rose	1.75 qt./1.66 L	15 x 11 x 4.4 x 2.5	50	Bulk
H111-11	Gray	1.75 qt./1.66 L	15 x 11 x 4.4 x 2.5	50	Bulk

w/Skirt, Large, Weight Capacity²: 300 lbs

H114-05	Gold	2.25 qt./2.13 L	16 x 13 x 4.9 x 2.8	25	Individually Bagged
---------	------	-----------------	---------------------	----	---------------------



H9113



H112



H111

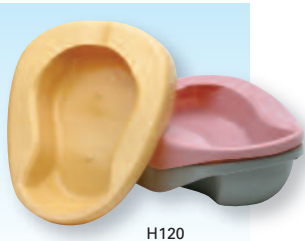


H114

²Weight that bedpans can hold as indicated is "deadweight" and not patient weight. Bedpans hold the weight of the patient's buttocks and mid-trunk of their body. The head, arms, legs and chest are supported by the bedding.

The material used for all the above plastic products is polypropylene unless otherwise indicated. Items are Latex Free (LF), DEHP and BPA free.

Bedpans



H120

Bedpans — Pontoon

- Pontoon styled bedpans are strong, solid and contoured for patient comfort. Smooth edges facilitate handling, transporting and emptying
- Front rim can easily be used as a handgrip for stabilization and removal of bedpan
- ID area for patient name, bed, room, etc. Rear overhang allows for added capacity while containing contents during transport

Code#	Color	Capacity	L x W x FH x BH (inches)	Qty/cs	Packaging
Weight Capacity[▮]: 250 lbs					
H120-05	Gold	2 qt./1.9 L	15 x 11 x 4.2 x 2.6	20	Bulk
H120-07	Turquoise	2 qt./1.9 L	15 x 11 x 4.2 x 2.6	20	Bulk
H120-10	Dusty Rose	2 qt./1.9 L	15 x 11 x 4.2 x 2.6	20	Bulk
H120-11	Gray	2 qt./1.9 L	15 x 11 x 4.2 x 2.6	20	Bulk



00085

Bedpans — Pontoon/Contour (Sterilizable*)

Code#	Color	Capacity	L x W x FH x BH (inches)	Qty/cs	Packaging
Weight Capacity[▮]: 250 lbs					
00085	Blue	2 qt./1.9 L	14 x 11 x 4.4 x 2.6	12	Bulk

Bedpans — Conventional

- The conventional bedpan is durable and has an increased capacity to better avoid spills. Back and side overhang aids in transporting of contents

Code#	Color	Capacity	L x W x FH x BH (inches)	Qty/cs	Packaging
Weight Capacity[▮]: 350 lbs					
H131-05	Gold	3 qt./2.84 L	14 x 12 x 4.4 x 2.8	12	Bulk
H131-10	Dusty Rose	3 qt./2.84 L	14 x 12 x 4.4 x 2.8	12	Bulk



H131



00080

Bedpans — Conventional, Adult (Sterilizable*)

Code#	Color	Capacity	L x W x FH x BH (inches)	Qty/cs	Packaging
Weight Capacity[▮]: 300 – 350 lbs					
00080	Blue	2 1/4 qt./2.25 L	14 x 11 x 3.8 x 2.5	6	Bulk

[▮]Weight that bedpans can hold as indicated is "deadweight" and not patient weight. Bedpans hold the weight of the patient's buttocks and mid-trunk of their body. The head, arms, legs and chest are supported by the bedding. The material used for all the above plastic products is polypropylene unless otherwise indicated.

*Sterilizable products can withstand temperature up to 275° F (135° C), steam sterilization. Items are Latex Free (LF), DEHP and BPA free.

Bedpans & Urinals

Bariatric Bedpan

- Low profile to improve usability
- Integrated handles for nurse safety and reduced injuries
- Center support for improved patient weight bearing
- Broad flat rim for improved patient support and comfort
- Holds 2 qt. of waste
- Easy to clean and sanitize with integrated pour spout
- Weight Capacity: 750 lbs. dead weight (Patient weight approximately 1200 lbs.)
- Yet can be used for patients as low as 200 lbs.



H133-15

Code#	Color	Capacity	L x W x FH x BH (inches)	Qty/cs	Packaging
H133-15	Orange	2 qt.	15.75 x 14.75 x 2.75 x 0.5	6	Bulk

Bedpans and Urinals — Stainless Steel*

- The 89010 heavy gauge adult bedpan has a load capacity of 500 lbs.
- Designed with immobile patients in mind, the 89020 fracture bedpan has a tapered end for improved comfort and placement ease. Guard prevents spills and built in handles simplify placement ease. Guard prevents spills and built in handles simplify placement and removal
- Seamless, stainless steel construction and open flange make this 89150 urinal easy to clean. A large loop handle allows for easy handling. Urinal can be positioned either vertically or horizontally
- Sold individually



89010



89150

Code#	Capacity	L x H x FH x BH (inches)
Adult Bedpan, Heavy Gauge.		
89010	40 oz.	14 x 11 ¹ / ₂ x 3 ⁵ / ₈ x 2
Urinal, Heavy Gauge.		
89150	7/8 qt./ .828 L	9 ¹ / ₈ x 5 ⁵ / ₈ x 4 ¹ / ₂ x 2

^aWeight that bedpans can hold as indicated is "deadweight" and not patient weight. Bedpans hold the weight of the patient's buttocks and mid-trunk of their body. The head, arms, legs and chest are supported by the bedding.

The material used for all the above plastic products is polypropylene unless otherwise indicated.

*Sterilizable products can withstand temperature up to 275° F (135° C), steam sterilization.

Items are Latex Free (LF), DEHP and BPA free.

Urinals



H140-01

Urinals — Male, with Lid *

- Translucent urinals permit measuring ease and visualization of contents
- Specially designed notched handle conveniently hangs on most styles and sizes of bedrails
- Snug fitting odor shield
- Wide base improves standing stability whether empty or full
- Patient conforming neck angle and opening helps confine contents when urinal is positioned horizontally
- Can conveniently be placed either vertically or horizontally
- Specially designed handle conveniently hangs on most beds or can be used with the Uri-Clip™ H143-01

Code#	Color	Capacity	Qty/cs	Packaging
Graduated: 25 cc and 1 oz increments up to 1,000 cc.				
H140-01	Translucent	1 qt./1000 cc	50	Bulk
H141-01	Translucent	1 qt./1000 cc	50	Individually Bagged

* Patent US #20110137272 A1



H140CR-01

Urinal — Male, with Comfort Ring[‡]

- Smooth opening for maximum patient comfort and safety
- Phosphorescent odor shield and ring opening for ease of use in the evenings
- Rotating odor shield and ring for patient preference
- Translucent urinals permits measuring ease and visualization of contents
- Specially designed handle conveniently hangs on most beds or can be used with the Uri-Clip™ H143-01

Code#	Color	Capacity	Qty/cs	Packaging
Graduated: 25 cc and 1 oz increments up to 1,000 cc.				
H140CR-01	Translucent	1 qt./1000 cc	50	Bulk

[‡]Patent Pending.

The material used for all the above plastic products is polypropylene unless otherwise indicated.

**Sterilizable products can withstand temperature up to 275° F (135° C), steam sterilization.*

Items are Latex Free (LF), DEHP and BPA free.

Urinals

Urinal — Female

- This translucent and disposable female urinal permits measuring ease, and viewing volume
- Specially designed handle conveniently hangs on most styles and sizes of bedrails, or with Uri-Clip™ H143-01
- Wide base improves standing stability, empty or full. Pronounced neck angle helps confine contents when urinal is positioned horizontally

Urinal — Female

Code#	Color	Capacity	Qty/cs	Packaging
Graduated: 25 cc and 1 oz increments up to 1000 cc.				
H145-01	Translucent	1 qt./1000 cc	36	Bulk



Urinals (Sterilizable*)

Code#	Color	Capacity	Qty/cs	Packaging
Male.				
00090	Blue	1.25 qt./1180 cc	12	Bulk w/Liner
w/Cover, Hanging Handle.				
00095	Blue	1 qt./1000 cc	12	Individually Bagged
00195	Translucent w/Blue Cover	1 qt./1000 cc	12	Individually Bagged
Replacement Cover for 00095 and 00195.				
00094	Blue	—	2300	Bulk



Uri-Clip™ Urinal Holder†

- Securely holds male and female urinal on bedside panels of the latest models of Stryker and Hill-Rom Med Surg patient care beds
- Provides a solution for hanging the urinal within easy reach of the patient
- The clip will not interfere with the raising/lowering of the side panels or any of the bed controls
- Holds an empty or full urinal at any angle that the bed rail is positioned
- Molded in heavy duty unbreakable polypropylene with rounded easy to clean surfaces
- Smoothly snaps over the top rail of the bed's side panel with the "hoop" to the outside of the bed

Code#	Color	Capacity	Qty/cs	Packaging
H143-01	White	—	48	Bulk



†Patent US D655407

The material used for all the above plastic products is polypropylene unless otherwise indicated.

*Sterilizable products can withstand temperature up to 275° F (135° C), steam sterilization.

Items are Latex Free (LF), DEHP and BPA free.

Slippers



7737



Stedi Tred® Fall Prevention Slippers

- Stedi Tred® design offers an ideal level of stable footing reducing the risk of slippage and avoiding tripping at the same time
- Our double sided tread keeps maximum tread coverage even if slipper rotates, minimizing the risk of falls
- Patients love the comfort from the tip of the toes to the top of the cuff
- Superior knit construction provides better patient comfort
- Stretchable cuff expands to adapt to patient's ankle in the event of swelling. Bariatric Plus cuffs expand even further to accommodate edema.
- Made with memory yarn to keep size and shape and last longer
- User friendly, easy open packaging

Code#	Color	Size	Qty/cs
8838-IWHI	White	Infant	96
7737-TBLU	Blue	Toddler	48
9939-PEDPEA	Peach	Pediatric	48
7737-SMBGE	Beige	Small/Medium	48
7737-SMGRY	Gray	Small/Medium	48
7737-SMYEL	Yellow	Small/Medium	48
7737-SMRED	Red	Small/Medium	48
7737-SMGRN	Green	Small/Medium	48
7737-LBGE	Beige	Large	48
7737-LGRY	Gray	Large	48
7737-LYEL	Yellow	Large	48
7737-LRED	Red	Large	48
7737-LGRN	Green	Large	48
7737-XLBGE	Beige	X-Large	48
7737-XLGRY	Gray	X-Large	48
7737-XLYEL	Yellow	X-Large	48
7737-XLRED	Red	X-Large	48
7737-XLGRN	Green	X-Large	48
7737-2XBGE	Beige	2X-Large	48
7737-2XGRY	Gray	2X-Large	48
7737-2XYEL	Yellow	2X-Large	48
7737-2XRED	Red	2X-Large	48
7737-2XGRN	Green	2X-Large	48
7737-BBGE	Beige	Bariatric	48
7737-BGRY	Gray	Bariatric	48
7737-BYEL	Yellow	Bariatric	48
7737-BRED	Red	Bariatric	48
7737-BPYEL	Yellow	Bariatric Plus	48
7737-BPRED	Red	Bariatric Plus	48

Patent US D655407

Items are Latex Free (LF), DEHP and BPA free.

Cleansing/Irrigation

Sitz Baths

- Fitting standard toilets and commodes, sitz baths are portable and can be used in a variety of healthcare settings (Hospital, Long Term Care, and Home Care)
- With rounded edges for comfort and ease of handling, sitz baths are perfect for administering soothing irrigation directly to the perineal area
- Each set contains a 2000mL bag, 60" tubing, adjustable clamp, basin, and easy to follow instructions printed directly on the bag
- H995 elongated sitz bath is designed for use with water saving, low water consumption (6.0 Lpf/1.6Gpf) style toilets with elongated bowl design



H990

Code#	Color	L x W x FH x BH (inches)	Qty/cs	Packaging
2000 mL Bag w/60" Tubing, (Material: Polypropylene Basin and Clamp / PVC Bag and Tubing).				
H990-05	Gold	15 x 15 x 4.7 x 4.3	10	Individually Bagged
H990-07	Turquoise	15 x 15 x 4.7 x 4.3	10	Individually Bagged
H990-10	Dusty Rose	15 x 15 x 4.7 x 4.3	10	Individually Bagged
Elongated, 2000 mL PVC Bag w/60" Tubing, Graduated: 500 mL increments up to 2000 mL and 1 and 2 qt measurements.				
H995-10	Dusty Rose	16 x 13 x 4.6 x 4.9	14	Individually Bagged



H995

GENT-L-Kare™ Cleansing Enema Set

- Convenient for administering enemas, cleansing sets place necessary supplies within easy reach
- Choose from two types of enema administration sets — bucket or bags
- Both hold 1500 mL of fluid and include 60" tubing with pre-lubricated tip, adjustable clamp, castile soap, waterproof drape, and easy to read instructions
- Single use



2560

Code#	Capacity	Qty/cs	Qty/pkg
Graduated: 500 mL increments up to 1500 mL, (Material: Polypropylene Bucket / PVC Tubing).			
2560	1500 mL Bucket/60" Tubing	50	Polybag
Graduated: 100 mL and 4 oz increments up to 1500 mL or 48 oz, (Material: PVC Bag and Tubing).			
2562	1500 mL Bag/60" Tubing	50	Box



2562

The material used for all the above plastic products is polypropylene unless otherwise indicated.

Cleansing/Irrigation



2565

GENT-L-Kare™ Vaginal Irrigation Set

- Conveniently packaged with necessary supplies for performing vaginal irrigation, each set contains 1500 mL irrigation (douche) bag
- 48" tubing, adjustable clamp, smooth vaginal tip and easy to read instructions

Code#	Capacity	Qty/cs	Qty/pkg
Graduated: 500 mL increments up to 1500 mL, (Material: PVC Bag and Tubing).			
2565	1500 mL Bag/48" Tubing	50	Box



02100

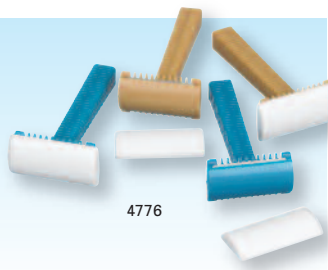
Perineal Bottle

- The flexible, easy to squeeze perineal bottle offers soothing cleansing with an 8 oz. capacity. Product features an easy to open push/pull cap that screws off for removal. Includes identification area for "Contents" and "Patient's Name"
- Non-sterile bottle is for external use only

Code#	Color	Capacity	Qty/cs	Packaging
02100	Translucent	8 oz/240 mL	50	Individually Packaged

Shave Prep Razors

- Double-edged razors with sharp stainless steel blades are designed to provide a close, smooth prep shave and to help minimize skin irritation
- Sonically welded blade guards stabilize/secure blades, and the nonslip grip allows for maximum control and positioning
- Weighted razors provide additional measure of balance and stability



4776

Code#	Color	Qty/cs	Packaging
Weighted Razor w/Stainless Steel Blade, (Material: Polystyrene).			
4776-02	Turquoise	100	Bulk
4776-75	Gold	100	Bulk
Unweighted Razor w/Stainless Steel Blade, (Material: Polystyrene).			
4777-02	Turquoise	100	Bulk
4777-75	Gold	100	Bulk
Prep Razor w/Double-sided Stainless Steel Blade, (Material: HPDE).			
07215	Black	100	Bulk

The material used for all the above plastic products is polypropylene unless otherwise indicated.

Irrigation & Suctioning Syringes

GENT-L-Kare™ Ear/Ulcer Syringe — Bulb

- Soft, pliable material makes these syringes safe and easy to use
- Whether irrigating or suctioning, the smooth tapered tip facilitates fluid administration/retrieval and minimizes discomfort while the ribbed bulb provides a non-slip grip

Code#	Capacity	Qty/cs	Packaging
(Material: PVC).			
4162-09	2 oz	200	Bulk: 1 Bag/100 Each
4163-09	3 oz	100	Bulk: 1 Bag/100 Each



Ear/Ulcer Syringe — Bulb, Sterile

Code#	Capacity	Qty/cs	Packaging
(Material: PVC).			
4172	2 oz	50	Peel Pouch
4173	3 oz	50	Peel Pouch

GENT-L-Kare™ Piston Syringe — Catheter Tipped, Sterile

- Designed for single handed use and optimal fluid control, piston syringes permit maximum fluid administration/retrieval, viewing of contents and ease of measurement

Code#	Capacity	Qty/cs	Packaging
w/Tip Protector, (Material: Polypropylene/Rubber or TPE).			
4091	60 cc/2 oz.	50	Peel Pouch



Bulb Syringe — Catheter Tipped

- Bulb syringes facilitate quick and easy direction of flow, viewing fluid, and ease of measurement
- The pliable, easy to grip bulb simplifies fluid administration/retrieval with syringes that are graduated

Code#	Capacity	Qty/cs	Packaging
(Material: Polypropylene/TPE).			
4088	60 cc/2 oz.	90	Bulk Polybag



Bulb Syringe — Catheter Tipped, Sterile

Code#	Capacity	Qty/cs	Packaging
w/Tip Protector, (Material: Polypropylene/TPE).			
4090	60 cc/2 oz.	50	Peel Pouch



Irrigation Tray - w/Piston Syringe - Sterile

Code#	Capacity	Qty/cs	Packaging
w/Tip Protector, (Material: Polypropylene/TPE).			
4093	60 cc/2 oz.	20	Peel Back Tray



The material used for all the above plastic products is polypropylene unless otherwise indicated. Items are Latex Free (LF) and BPA free.

To Order: 800.511.6298 • www.medegenmed.com

Denture Cups & Procedure Trays

Denture Cups

H980-91



H980-92

- H980 is available in two bright unique colors, making the denture cup easier to locate
- Translucent version is also available
- Minimizes hospital expense for lost dentures
- Etched surface for identification marking
- Opaque in color for patient privacy
- Integrated lid design
- Leak resistant with a double seal closure
- Stackable for easy storage
- Can store other personal items like watches, jewelry and change
- Recyclable

Code#	Color	D x W x L (inches)	Qty/cs	Packaging
H980-01	Translucent	2 x 4 x 3	200	Bulk
H980-91	Pink	2 x 4 x 3	200	Bulk
H980-92	Green	2 x 4 x 3	200	Bulk

Denture Cups (Sterilizable *)

Code#	Color	Capacity	Qty/cs	Packaging
Hinged Lid.				
00140	Blue	8 oz	24	Bulk

00140



Procedure Trays

Code#	Color	Capacity	Qty/cs	Packaging
w/Liner, (Material: HDPE).				
05098	Natural	400 oz	12	Bulk

O.R. Trays

Code#	Description	L x W x H (Inches)	Color	Qty/cs	Packaging
CPT-9112	Full Deep Tray	11 x 10 x 2	Blue	160	Bulk

*Sterilizable products can withstand temperatures up to 275°F (135°C), Steam Sterilization
Items are Latex Free (LF), DEHP and BPA free.

Medicine Cups

Premium Medicine Cups

- Designed for easy dispensing of liquid medications
- The sides are flexible, bendable and do not lose their shape
- Packaged in sleeves for easy distribution and storage

Code#	Color	Capacity	Qty/cs	Packaging
Graduated: mL and oz. only				
12103	Translucent	2 oz./60 cc	1150	46 Sleeves of 25 each



12103

Economy Medicine Cups

- Rolled lip for Patient comfort and to reduce drips
- Packaged in sleeves for easy distribution and storage

Code#	Color	Capacity	Qty/cs	Packaging
Graduated: mL only				
02102A	Translucent	2 oz/60 cc	1150	46 Sleeves of 25 Each
Household Graduated: mL, cc, Teaspoon, Tablespoon				
02301	Translucent	1 oz/30 cc	5000	50 Sleeves of 100 Each
mL only Graduates				
12301	Translucent	1 oz/30 cc	5000	50 Sleeves of 100 Each



02102A

02301

12301

Medicine Cups — Stainless Steel*

- This 2 oz. stainless steel medicine cup is graduated in both ounces and cc's for easy measuring and has a grooved bottom for stability

Code#	Capacity	Dia x H (inches)	Qty/cs
Graduated in both oz and cc.			
84920	2 oz/60 cc	2 x 2	24



84920

[†]NSA Approved (National Sanitation Foundation).

The material used for all the above plastic products is polypropylene unless otherwise indicated.

*Sterilizable products can withstand temperature up to 275° F (135° C), steam sterilization.

Items are Latex Free (LF), DEHP and BPA free.

Collectors



02050

Specimen Collectors

- The container on this commode specimen collector detaches from the ring for convenient transportation and lab use
- Simple instructions on the cover allow the patient to utilize the collector without nursing assistance
- 02050 includes support ring, 1 quart graduated specimen container, lid with instructions and a patient I.D. area with lines for date, time, name, DOB and doctor information
- Securely fitting standard toilets and commodes, the winged edges on these specimen collectors facilitate application, handling and removal
- Quick visualization and measurement of specimens are easily achieved while the large capacity helps reduce the risk of spills
- A handy pour spout permits specimens to be discarded quickly and safely

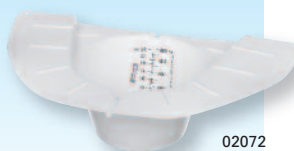
Code#	Color	Capacity	L x W x H (inches)	Qty/cs	Packaging
Commode, Graduated: 1 qt. (Material: Polypropylene/LDPE/Polystyrene [ring]).					
02050	White w/Powder Blue Ring	32 oz/950 mL	14 x 7.4 x 2.9	100	Bulk

GENT-L-Pan™ Deluxe Specimen Pan, Slant, Graduated: 2 oz to 12 oz in 2 oz increments, 16 oz to 32 oz in 4 oz increments, 50 cc to 400 cc in 50 cc increments and 400 cc to 1000 cc in 100 cc increments.

02071	White	32 oz/1000 mL	12 x 8.2 x 4	100	Bulk
-------	-------	---------------	--------------	-----	------

GENT-L-Pan™ Deluxe Specimen Pan Graduated: 75 cc and then from 100 cc to 800 cc in 50 cc increments and from 2 oz to 27 oz in 2 oz increments.

02072	White	27 oz/800 mL	14 x 8.3 x 3.8	100	Bulk
-------	-------	--------------	----------------	-----	------



02072

Triangular Graduates

- Ideal for measuring intake or output, these easy to handle graduated containers have a frosted panel for writing pertinent patient information.
- H971-01 and H972-01 are made from unbreakable translucent polypropylene.
- The H972-01 has printed black graduations for increased visibility and ease of measuring fluid level.



H971-01



H972-01

Code#	Color	Capacity	Qty/cs	Packaging
Graduated: 50 cc and 2 oz increments up to 1,000 cc and 32 oz.				
H971-01	Translucent	32 oz/1000 cc	200	20 Sleeves of 10 Each
Graduated: 50 cc and 2 oz increments up to 1,000 cc and 32 oz.				
H972-01	Translucent	32 oz/1000 cc	200	20 Sleeves of 10 Each

The material used for all the above plastic products is polypropylene unless otherwise indicated. Items are Latex Free (LF), DEHP and BPA free.

Stainless Steel Essentials

Graduated Measures *

- Stainless steel graduated measures offer an easy to grip handle and a smooth pour spout
- The 95160, 95325 and 95640 are stainless steel with raised graduations
- Sold Individually

Code#	Capacity	Dia x H (inches)
Flo-Spun, Standard Gauge.		
95160 [†]	16 oz	4 ⁵ / ₈ x 3 ¹ / ₂
95325 [†]	32 oz	5 ¹ / ₄ x 4 ⁵ / ₈
95640 [†]	64 oz	6 ⁷ / ₈ x 5 ¹ / ₂



Beaker/Griffins/Oil Cups *

- Easy to clean seamless construction of non-corrosive 304 stainless steel
- The handy pour spout on the Beaker/Griffin styles provides easy transfer of liquids
- The 79540 Beaker/Oil Cup has an easy to hold handle
- Flared edge makes pouring easier
- Sold Individually

Code#	Capacity	Dia x H (inches)
Beaker/Oil Cup.		
79310	1/2 qt./500 L	3 ¹ / ₈ x 4 ⁵ / ₈
Beaker/Oil Cup w/Handle.		
79540 [†]	4 qt	8 ³ / ₈ x 6 ¹ / ₂
Beaker/Griffin w/Spout.		
80125	125 mL	2 ¹ / ₂ x 2 ⁵ / ₈
80250	250 mL	3 x 3 ³ / ₈
80600	600 mL	3 ³ / ₄ x 4 ⁵ / ₈
81200	1200 mL	4 ⁵ / ₈ x 6
82000	2000 mL	5 ³ / ₈ x 7 ¹ / ₈
84000	4000 mL	6 ¹ / ₈ x 8 ¹ / ₈



79310

[†]NSA Approved (National Sanitation Foundation).

The material used for all the above plastic products is polypropylene unless otherwise indicated.

*Sterilizable products can withstand temperature up to 275° F (135° C), steam sterilization.

Stainless Steel Essentials



87720

Ointment Jars *

- Stainless steel jar features strap handle lid for easy removal
- Sold Individually

Code#	Capacity	Dia x H (inches)
87720	120mL	3 ¹ / ₈ x 3



88700

Applicatory Jar *

- This stainless steel applicator jar comes with an easy to remove strap handle lid

Code#	Capacity	Dia x H	Qty/cs
88700	830 mL	3 ¹ / ₄ x 7 ³ / ₈	1



Dressing Jars *

- These dressing jars come in a variety of sizes and have easy to clean seamless design with recessed handle lids
- Sold Individually

Code#	Capacity	Dia x H (inches)
88000	.5 L	4 ³ / ₄ x 2 ³ / ₄
88010	.9 L	4 ¹ / ₄ x 5 ³ / ₈
88020	1.9 L	5 x 6 ³ / ₄
88031	3 L	5.9 x 7.1
88040	4 L	7 ¹ / ₄ x 7 ¹ / ₈
88061	5 L	7.1 x 8.3
88080	7.6 L	8 ¹ / ₄ x 10 ¹ / ₈

Forcep Jars

Code#	Dia x H (inches)
88780	7 ¹ / ₂ Depth
88740	2.125 x 4.25 Depth

*Sterilizable products can withstand temperature up to 275° F (135° C), steam sterilization.

Central Supply – Stainless Steel

Buckets and Pails *

- The 59131 kick bucket stand is an easy glide, stainless steel stand with rubber bumpers to protect walls and doorways
- The 58161 stainless steel pail offers a side handle to aid in pouring
- Specially designed “ears” for the handle are an integral part of the pail and will resist breaking
- Sold individually



58030

Code#	Capacity	Top Dia x Btm Dia x H (inches)	Cover
Bucket/Utility Pail, Tapered.			
58130	12 ¹ / ₂ qt/11.8 L	12 x 8 x 10	58030
58160	14 ³ / ₄ qt/13.9 L	12 x 9 ¹ / ₂ x 10 ¹ / ₈	58030
M58200	23qt / 21.77L	14 ⁷ / ₈ x 11 ⁷ / ₈	
Bucket/Utility Pail.			
59150	15 ¹ / ₂ qt/14.7 L	12 x 10 x 10	
Kick Bucket Stand w/58130.			
59131	–		

Storage Containers and Covers *

- Highly non-corrosive stainless steel can be heated and provides a smooth inner surface for easy cleaning
- Complete stainless containers have aluminum bonded bases for even heat conductivity
- Welded handles offer ease of transportation without drill holes or rivets



Code#	Capacity	Cover
Storage Container.		
78580 [†]	11 ¹ / ₂ qt/11 L	77112
78610 [†]	20 qt/19 L	78672
78620 [†]	24 qt/23 L	78672
78630 [†]	38 ¹ / ₂ qt/36 L	
78640 [†]	60 qt/57 L	
Storage Container/Beaker.		
78710 [†]	1 ¹ / ₄ qt/1.2 L	
78720 [†]	2 qt/1.9 L	79040
78730 [†]	3 ¹ / ₂ qt/3.3 L	
78740 [†]	4 ¹ / ₄ qt/4.0 L	
78760 [†]	6 qt/5.7 L	
78780 [†]	8 ¹ / ₄ qt/7.8 L	
78820 [†]	12 qt/11.4 L	

[†]NSA Approved (National Sanitation Foundation).

*Sterilizable products can withstand temperature up to 275° F (135° C), steam sterilization.

To Order: 800.511.6298 • www.medegenmed.com

Central Supply – Stainless Steel



Instrument Trays — Full Size, Regular*

- Stainless steel instrument trays have easy to clean rounded corners and a flat bottom for secure placement
- Sold Individually

Code#	Size	Capacity	L x W x H (inches)	Cover
Standard Gauge.				
30042	Full	13 ¹ / ₂ qt./12.8 L	20 ³ / ₄ x 12 ³ / ₄ x 4	
30062	Full	20 qt./18.9 L	20 ³ / ₄ x 12 ³ / ₄ x 6	
Tray w/Squared Corners, Standard Gauge.				
74262 [†]		5 qt./4.7 L	16 ³ / ₈ x 9 ³ / ₄ x 2 ¹ / ₂	77150

Instrument Trays — Regular*

Code#	Capacity	L x W x H (inches)	Cover
Standard Gauge.			
30222	4 ¹ / ₈ qt./3.9 L	12 ³ / ₄ x 10 ³ / ₈ x 2 ¹ / ₂	75120
30242	6 ³ / ₄ qt./6.4 L	10 ³ / ₈ x 12 ³ / ₄ x 4	75120
30262	10 ¹ / ₈ qt./9.6 L	10 ³ / ₈ x 12 ³ / ₄ x 6	75120
Long Instrument Tray, Standard Gauge.			
30542	–	20 ³ / ₄ x 6 ¹ / ₂ x 4	75050
30562	–	20 ³ / ₄ x 6 ¹ / ₂ x 6	75050
Tray w/Squared Corners.			
75202 [†]	2 ¹ / ₂ qt./2.4 L	9 ⁷ / ₈ x 8 ¹ / ₈ x 2 ¹ / ₂	
Standard Gauge.			
30122	5 ³ / ₄ qt./5.4 L	13 ⁷ / ₈ x 12 ³ / ₄ x 2 ¹ / ₂	
30142	9 ¹ / ₂ qt./9.0 L	13 ⁷ / ₈ x 12 ³ / ₄ x 4	
30322	2 ⁵ / ₈ qt./2.5 L	6 ⁷ / ₈ x 12 ³ / ₄ x 2 ¹ / ₂	75130
30342	4 ¹ / ₈ qt./3.9 L	6 ⁷ / ₈ x 12 ³ / ₄ x 4	75130
30362	6 ¹ / ₈ qt./5.9 L	6 ⁷ / ₈ x 12 ³ / ₄ x 6	75130
30422	1 ⁷ / ₈ qt./1.8 L	6 ³ / ₈ x 10 ³ / ₈ x 2 ¹ / ₂	75140
30462	4 ¹ / ₈ qt./4.4 L	6 ³ / ₈ x 10 ³ / ₈ x 6	75140
30622	1 ¹ / ₄ qt./1.2 L	6 ⁷ / ₈ x 6 ¹ / ₄ x 2 ¹ / ₂	75160
30642	1 ⁷ / ₈ qt./1.8 L	6 ⁷ / ₈ x 6 ¹ / ₄ x 4	75160
30922	5 ⁵ / ₈ qt./1.6 L	6 ⁷ / ₈ x 4 ¹ / ₂ x 2 ¹ / ₂	
30942	1 ¹ / ₈ qt./1.1 L	6 ⁷ / ₈ x 4 ¹ / ₂ x 4	

Instrument Trays — Regular*

73092 [†]	1 qt./ .95L	8 ⁷ / ₈ x 5 ¹ / ₈ x 1 ⁷ / ₈
73122 [†]	2 ¹ / ₂ qt./2.4L	12 ¹ / ₈ x 7 ³ / ₄ x 2
74102 [†]	1 ³ / ₄ qt./1.5 L	10 ¹ / ₈ x 6 ⁵ / ₈ x 2
74122	2 ¹ / ₂ qt./2.4 L	12 ¹ / ₄ x 7 ³ / ₈ x 2 ¹ / ₈

[†]NSA Approved (National Sanitation Foundation).

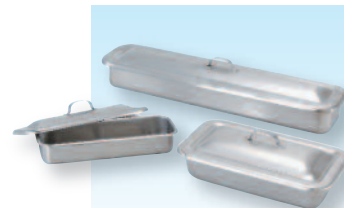
*Sterilizable products can withstand temperature up to 275° F (135° C), steam sterilization.

Central Supply – Stainless Steel

Instrument Trays — Catheter *

- The trays have a ridged bottom for easy removal of instruments from the bottom of the tray

Code#	L x W x H (inches)
Catheter Tray Set.	
82830	8 1/2 x 3 x 1 1/2
82950	8 7/8 x 5 x 2
82960	8 7/8 x 5 x 3
83120	12 1/8 x 7 5/8 x 2 1/8
83170	17 x 4 x 2 1/8



Instrument Trays — Perforated *

- Perforated trays allow for improved sterilization flow and reducing wet packs
- Perforated edges are rounded to prevent cuts and scratches
- Sold Individually

Code#	Size	L x W x H (inches)	Cover
Standard Gauge.			
30023	Full	20 7/8 x 12 3/4 x 2 3/8	77250
30043	Full	21 x 13 x 4	77250
Standard Gauge.			
30223	1/2	12 5/8 x 10 1/4 x 2 1/2	



Instrument Trays — Mayo-Style, Regular *

- These solid instrument trays have rounded corners and open beads for easy cleaning.
- Sold Individually

Code#	L x W x H (inches)
Solid.	
80130 [†]	13 5/8 x 9 3/4 x 5/8
80150 [†]	15 1/8 x 10 5/8 x 5/8
80170 [†]	17 1/4 x 11 3/4 x 5/8
80190 [†]	19 1/8 x 12 1/2 x 3/4
80210 [†]	21 3/8 x 16 1/2 x 3/4



Instrument Tray — Mayo-Style, Perforated *

- Perforated trays allow for improved sterilization flow and reducing wet packs. Perforated edges are rounded to prevent cuts and scratches
- Sold Individually

Code#	L x W x H (inches)
80133	13 5/8 x 9 3/4 x 5/8



80133

[†]NSA Approved (National Sanitation Foundation).

*Sterilizable products can withstand temperature up to 275° F (135° C), steam sterilization.

Product Number Index

Product	Pg	Product	Pg	Product	Pg	Product	Pg	Product	Pg
00020	13	07110	10	3933D	8	7737-BBGE	20	80210	32
00040	10	07215	22	4088	23	7737-BGRY	20	80250	27
00041	10	07332	10	4090	23	7737-BGRY	20	80600	27
00046	10	10606	4	4091	23	7737-BPRED	20	81020	7
00047	12	10906	4	4093	23	7737-BPYEL	20	81100	7
00050	10	11606	4	4162-09	23	7737-BRED	20	81200	27
00060	9	11906	4	4163-09	23	7737-BYEL	20	82000	27
00063	9	12103	25	4172	23	7737-LBGE	20	82830	32
00080	16	12301	25	4173	23	7737-LGRN	20	82950	32
00081	14	12301	25	4776-02	22	7737-LRED	20	82952	32
00083	14	16110	3	4776-75	22	7737-LYEL	20	82960	32
00085	16	16111	3	4777-02	22	7737-SMBGE	20	83120	32
00090	19	16112	3	4777-75	22	7737-SMGRN	20	83170	32
00094	19	16113	3	4870-02	10	7737-SMGRY	20	84000	27
00095	19	16120	5	58030	29	7737-SMRED	20	84920	25
00100	10	16130	6	58130	29	7737-SMYEL	20	86300	11
00110	3	1933	8	58160	29	7737-TBLU	20	87120	11
00111	3	2560	21	59131	29	7737-XLBGE	20	87130	11
00112	3	2562	21	59150	29	7737-XLGRN	20	87300	11
00113	3	2565	22	68470	7	7737-XLGRY	20	87320	11
00120	5	27207	10	68750	11	7737-XLRED	20	87340	11
00130	6	2933	8	69006	11	7737-XLYEL	20	87360	11
00140	24	30023	32	69030	11	78590	29	87404	11
00195	19	30042	30	69040	11	78610	29	87406	11
01195	2	30043	32	7107	10	78620	29	87410	11
01216	10	30062	30	73092	31	78630	29	87414	11
01232	10	30122	31	73122	31	78640	29	87420	11
02010	10	30142	31	74102	31	78710	29	87720	28
02011	10	30222	30	74122	31	78720	29	88000	28
02050	26	30223	32	74262	30	78730	29	88010	28
02067	5	30242	30	75050	30	78740	29	88020	28
02068A	5	30262	30	75120	30	78760	29	88031	28
02069	5	30322	31	75140	31	78780	29	88040	28
02071	26	30342	31	75160	31	78820	29	88061	28
02072	26	30362	31	75202	31	79040	29	88080	28
02100	22	30422	31	77112	29	79310	27	8838-IWHI	20
02102A	25	30542	30	77150	30	79540	27	88560	9
02117	10	30562	30	77250	32	80125	27	88580	9
02301	25	30622	31	77372XBGE	20	80130	32	88600	9
02433	10	30642	31	7737-2XGRN	20	80133	32	88620	9
04216	10	30922	31	7737-2XGRY	20	80150	32	88700	28
05098	24	30942	31	7737-2XRED	20	80170	32	88740	28
07105	10	3933	8	7737-2XYEL	20	80190	32	88780	28

Product	Pg	Product	Pg	Product	Pg	Product	Pg	Product	Pg
89010	17	H113-10.	15	H220-10.	5	H310-05.	8	H371-11.	13
89150	17	H113-11.	15	H222-05.	2	H310-07.	8	H800-07.	10
95160	27	H114-05.	15	H222-07.	2	H310-10.	8	H9113-05.	15
95325	27	H120-05.	16	H222-10.	2	H310-11.	8	H9113-10.	15
95640	27	H120-07.	16	H222-11.	2	H350-05.	9	H971-01.	26
9939-PEDPEA	20	H120-10.	16	H223-01.	4	H350-07.	9	H972-01.	26
CPB-16.	10	H120-10.	16	H224-10.	2	H350-10.	9	H980-01.	24
CPB-32.	10	H120-11.	16	H225-10.	5	H350-11.	9	H980-91.	24
H100-05.	14	H131-05.	16	H227-02.	4	H354-05.	9	H980-92.	24
H100-07.	14	H131-10.	16	H228-10.	5	H354-07.	9	H990-05.	21
H100-10.	14	H133-15.	17	H236-05.	7	H354-10.	9	H990-07.	21
H100-11.	14	H140-01.	18	H236-10.	7	H360-05.	12	H990-10.	21
H100BG-05.	14	H140CR-01.	18	H237-10.	7	H360-10.	12	H995-10.	21
H101-05.	14	H141-01.	18	H238-10.	5	H360-11.	12	HLID-01	4
H101-10.	14	H143-01.	19	H241-05.	6	H361-10.	12	HLID-08	4
H102-05.	14	H145-01.	19	H241-07.	6	H362-05.	12	HLID-10	4
H102-10.	14	H201-08.	4	H241-10.	6	H362-07.	12	HLID-11	4
H103-10.	15	H204-01.	4	H241-11.	6	H362-10.	12	M58200.	29
H111-05.	15	H204-10.	4	H250-05.	5	H362-11.	12	M69014.	11
H111-10.	15	H204-11.	4	H250-07.	5	H370-05.	13	M69260.	11
H111-11.	15	H205-01.	4	H250-10.	5	H370-10.	13	M69290.	11
H112-05.	15	H205-08.	4	H250-11.	5	H370-10.	13	PO1633-050.	10
H112-07.	15	H205-10.	4	H300-05.	8	H370-11.	13	PO1629-500.	10
H112-11.	15	H205-11.	4	H300-07.	8	H371-05.	13	PO1630-250.	10
H113-05.	15	H219-02.	5	H300-10.	8	H371-07.	13		
H113-07.	15	H220-05.	5	H300-11.	8	H371-10.	13		

Manufacturer's Guarantee of Long-Term Durability of Medegen's Reusable / Sterilizable Plastic Healthcare Products

Medegen's Reusable / Sterilizable Plastic Healthcare Products not only offer the finest in design, quality, appearance and utility, but also what no other manufacturer of this type of product offers: a long-term guarantee of durability. With normal care and usage, all of the products comprising the line of Medegen Reusable / Sterilizable Plastics will give many years of satisfactory service. To back up this statement, we proudly extend the following guarantee:

Guarantee

Medegen, through its authorized distributors, guarantees to replace, at no charge, any of Medegen's Reusable / Sterilizable Plastic Healthcare Products which, in the course of normal daily hospital / institution usage under conditions of reasonable care (including autoclaving of up to 275° F or 135° C), develop any defect rendering it unusable. This guarantee remains in effect for a period of two (2) years from date of purchase.

Conditions of Reasonable Care

Medegen's Reusable / Sterilizable Plastics are sterilizable / autoclavable up to 275° F or 135° C. Care must be taken, however, to avoid the stacking of heavier items upon thinner walled products, which may cause distortion of items packed on the bottom.

Medegen reserves the right to change products, materials and packaging configuration without notice.



*To view our products online, please visit us at
www.medegenmed.com or directly with your
device by scanning the QR code to the left.*



MEASUREMENT & COLLECTION

PATIENT BEDSIDE ESSENTIALS

COLLECTION & CONTAINMENT

209 Medegen Drive
Gallaway, TN 38036
800.511.6298

Customer Service Fax:
631.714.6311

Customer Service:
CSservice@medegenmed.com

www.medegenmed.com

